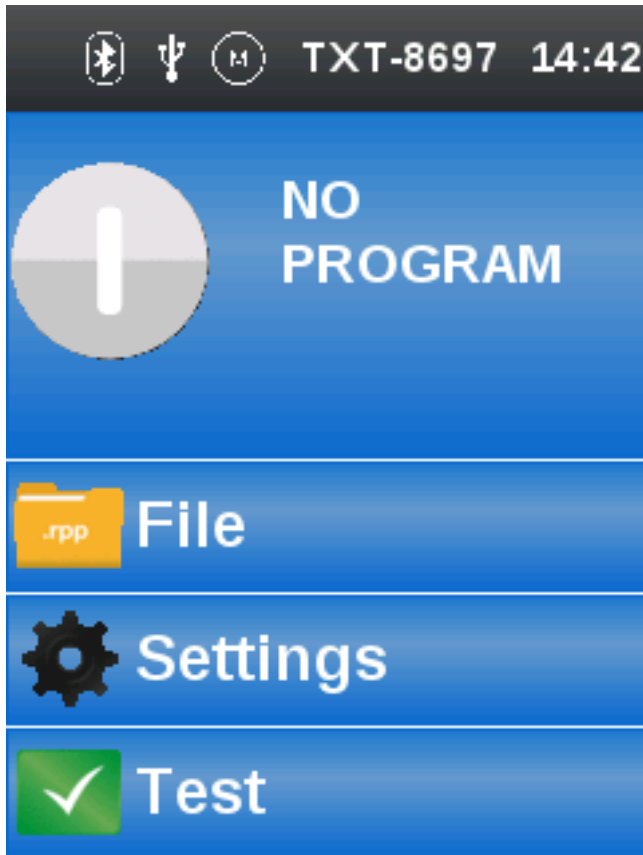
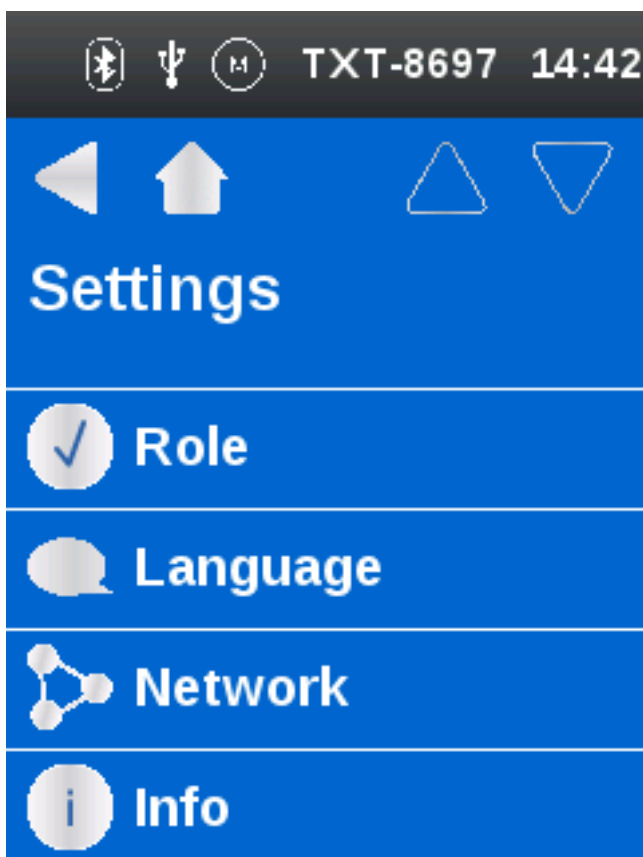


Step-by-step manual for the WLAN client mode



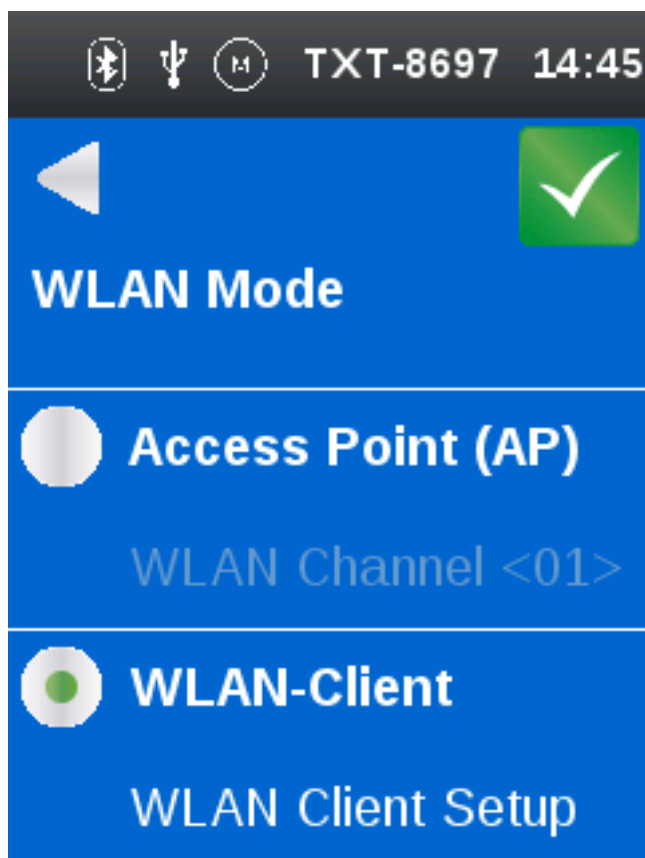
Click „Settings“.



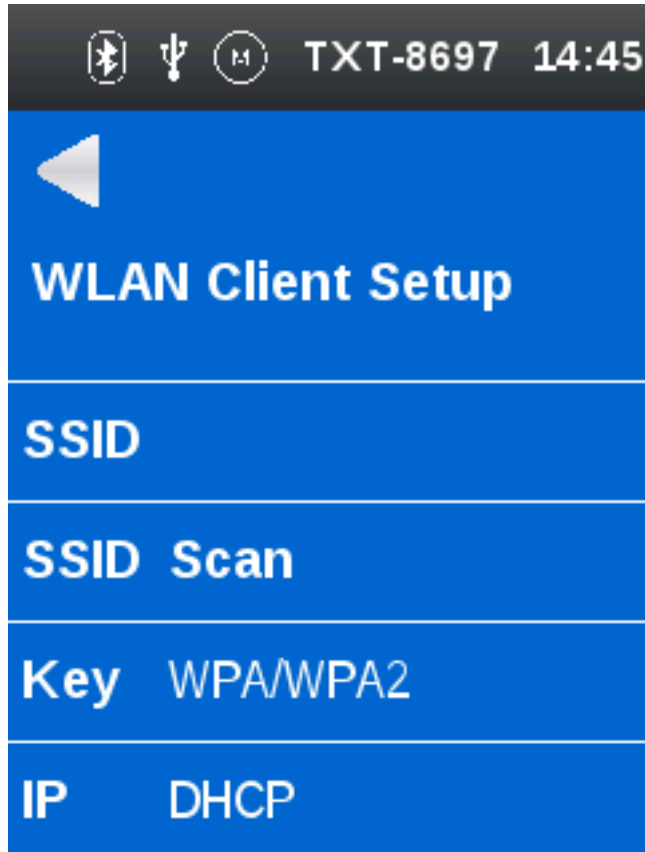
Click „Network“.



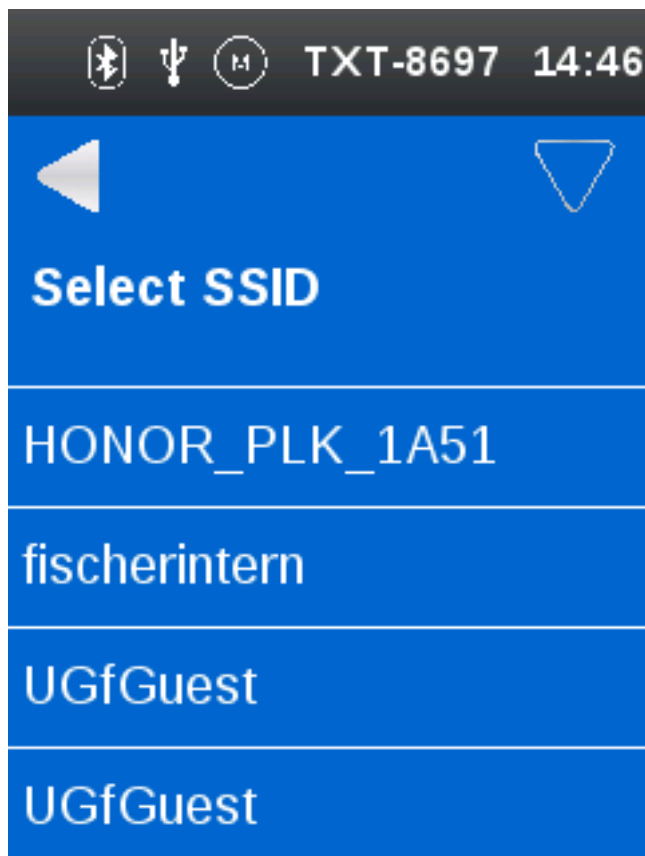
Click „WLAN Mode“.



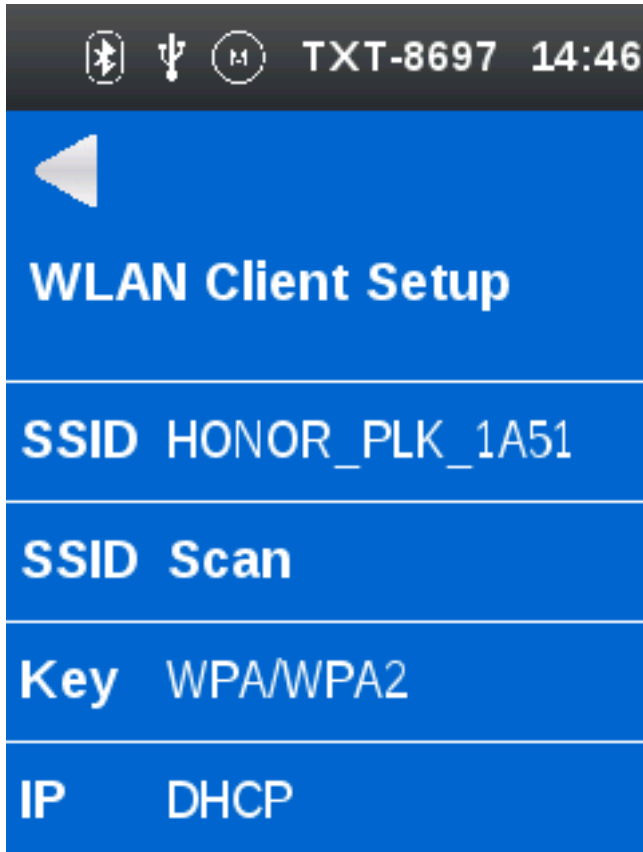
Click on “WLAN-Client” and then on “WLAN Client Setup”.



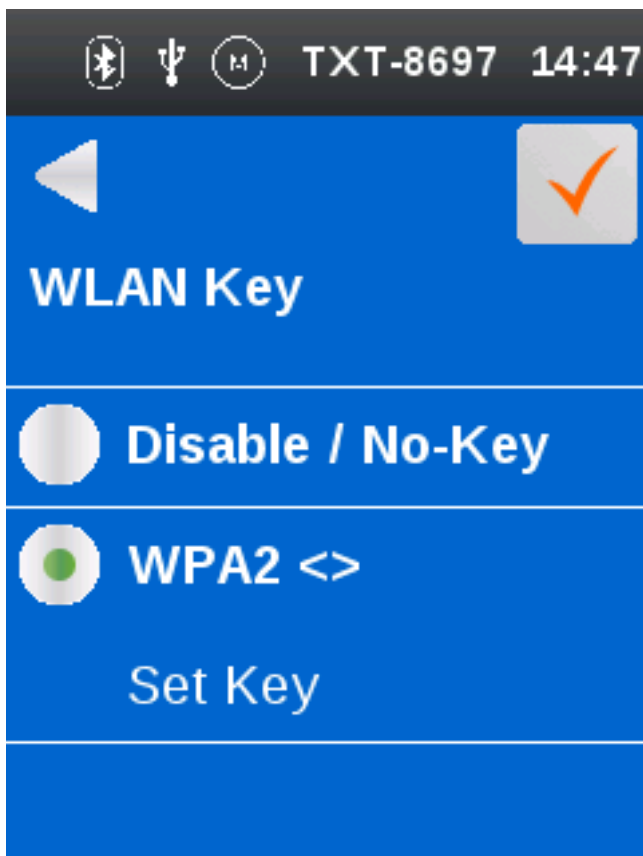
Click "SSID Scan".



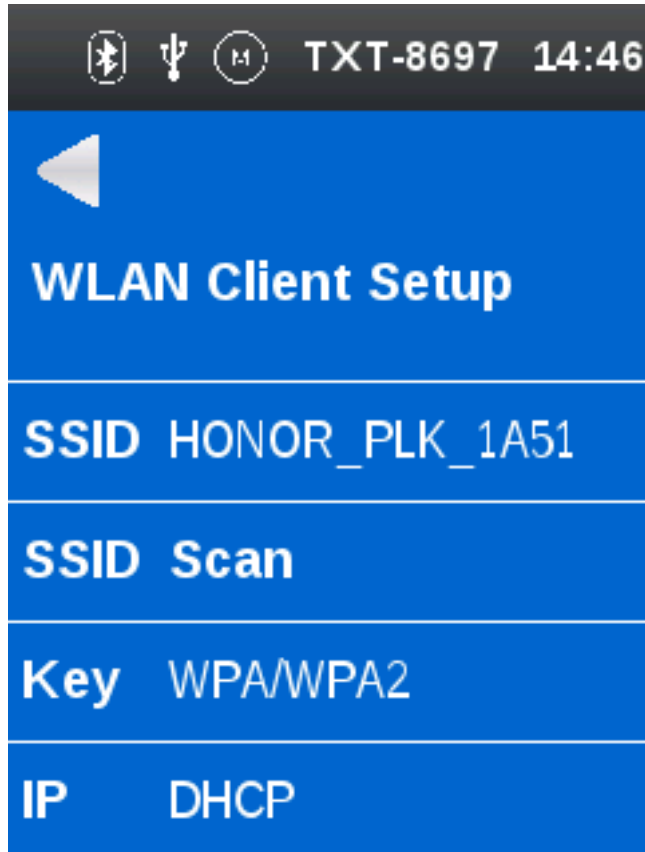
Choose the network that you want to connect to.



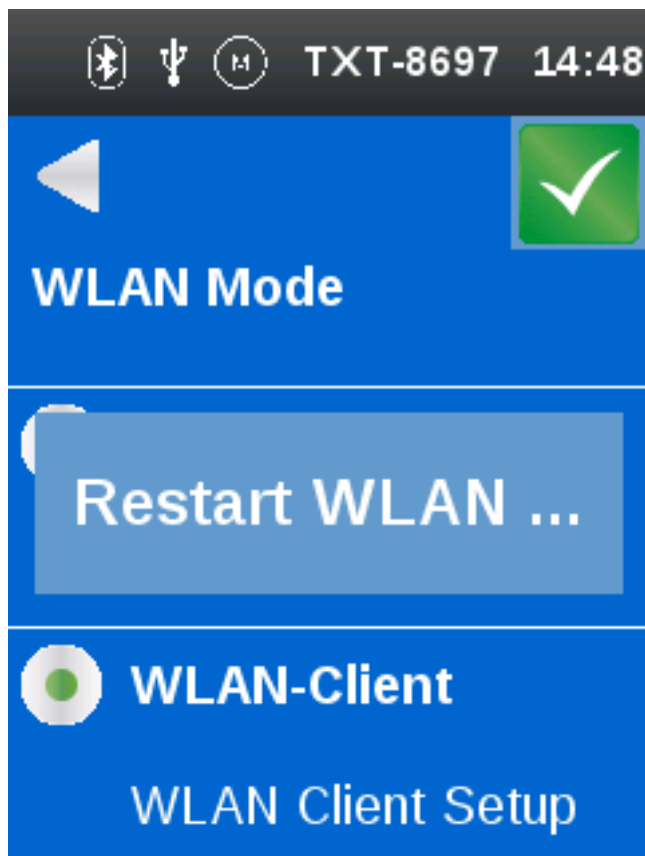
Click "Key".



Choose "WPA2 <>" and click "Set Key". Enter the passphrase of the chosen network. Click the check mark. Then, the chevrons should be filled with asterisks. Click the back-button (arrow, which points to the left).



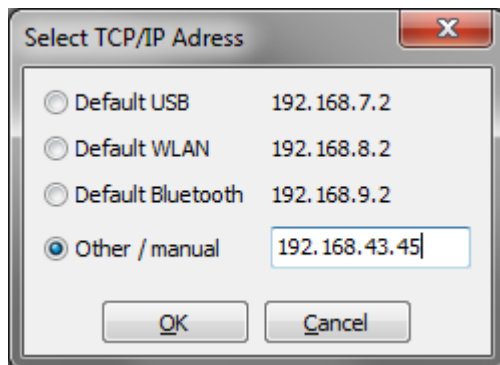
If you want to obtain the IP address dynamically, the setup is done. Click the back-button (arrow, which points to the left).



Click the green check mark. The message "Restart WLAN ..." will appear. If the connection is successful, the menu changes to the "WLAN Setup Menu".



The WLAN symbol in the status bar and the shown IP address indicate if the connection was successful. You need this IP address to connect to the TXT controller from ROBO Pro.



Start ROBO Pro, open the window "Interface / Port" and choose the TXT controller. Click "OK". In the next window, choose "Other/ manual" and enter the IP address that is displayed on your TXT controller.